

~ Forthcoming Events ~

會議/座談會 *Coming Overseas / Local Conference for Elder Care:*

1. Palliative Care in Residential Care Homes for the Elderly, Asia Pacific Regional Conference on End-of-life and Palliative Care in Long Term Care Settings, 26-28 September 2013, Hong Kong; Email: aprc@hkag.org
2. 第十屆世界華人地區長期照護會議, 24-26 October 2013, 澳門; <http://www.kwnc.edu.mo>
3. Strengthening Primary Health Care and Quality Services for Older People in Hong Kong, 20th Annual Congress of Gerontology, 23 November 2013, Langham Hotel, Hong Kong; <http://www.hkag.org>
4. CAG 2013: Aging From Cells to Society, Canadian Association on Gerontology, 17-19 October 2013, Halifax, Nova Scotia, Canada; <http://CAG2013.ca>

歡迎投稿

歡迎各會員投稿，請將稿件或照片(請註明相片標題)
連同個人聯絡資料電郵至 publication@hkcgcn.org
為答謝投稿會員，來稿一經刊登，可獲贈精美紀念品一份。

Welcome to put advertisement, for enquiries, please write to: publication@hkcgcn.org



香港老年學護理專科學院
Hong Kong College of Gerontology Nursing

PLEASE
AFFIX
STAMP
HERE
請在此貼上郵票

Printed Matter
印刷品

Address: GPO Box 657, Hong Kong Welcome to visit our web: <http://www.hkcgcn.org>

2012-2014 Council Members

President 主席

Mr. YUEN Chi-man, Anders
源志敏先生

Vice-President 副主席

Dr. LOW Pau-le, Lisa
羅佩麗博士
Ms. HO Kam-ye, Joan
何錦儀女士
Ms. TANG Fung-ki, Ivy
鄧鳳琪女士

Honorary Secretary 名譽秘書

Ms. CHAN Mei-wai
陳美惠女士
Ms. CHENG Po-po, Peggy
鄭寶寶女士

Honorary Treasurer 名譽財政

Ms. LUK Po-chu, Bella
陸寶珠女士
Dr. LAW Po-ka, Noble
羅寶嘉博士

Accreditation Committee 認證委員會

Dr. LOW Pau-le, Lisa
羅佩麗博士
Ms. CHAN Mei-wai
陳美惠女士
Dr. LAW Po-ka, Noble
羅寶嘉博士
Ms. HON Sin-ming, Alice
韓倩明女士

Registration & Membership Committee 註冊及會籍委員會

Ms. CHENG Po-po, Peggy
鄭寶寶女士
Ms. CHU Ho-nee, Connie
朱可悠女士
Ms. LEUNG Yin-ling, Ruth
梁燕玲女士
Ms. LUK Po-chu, Bella
陸寶珠女士

Professional Development Committee 專業發展委員會

Ms. HO Kam-ye, Joan
何錦儀女士
Ms. LEE Siu-ching, Patricia
李小清女士
Ms. MAK Po-kit, Flora
麥寶潔女士
Dr. PAU Mei-lin, Margaret
鮑美蓮博士
Ms. POON Po-wah, Rebecca
潘寶華女士
Dr. SIU Lai-sheung, Katherine
蕭麗嫦博士

Promotion & Public Relations Committee 推廣及公共關係委員會

Ms. TANG Fung-ki, Ivy
鄧鳳琪女士
Ms. IP Kam-tin, Regina
葉錦田女士
Ms. YUEN Yuet-sheung, Carol
袁月嫦女士

President's Message

My Dear Fellow Members,

Time passes so quickly and I would like to take this opportunity to share with you some of our achievement in the first half year of 2013.

In light of the establishment of the Provisional Hong Kong Academy of Nursing and to truly reflect the enhanced core missions and roles as one of the Academy Colleges, we had drafted our College Fellowship Programme Outlines in 2012. With this programme outlines, we are able to enhance incorporation of our specialised clinical knowledge and experience into efficient and effective nursing practices in elder care. We are delighted to announce that 58 Fellows are successfully admitted as our College Founding Fellows and we had also participated in "The Provisional Hong Kong Academy of Nursing Annual Fellowship Conferment cum Nursing Charter on Tobacco Control Signing Ceremony" on 4 May 2013. Countless number of professional people and well-known celebrities had witnessed this grand occasion.

In meeting with the ever-challenging health care system and the complex community environment, we have invited Dr Felix CHAN, Member of the Elderly Commission, as our Keynote Speaker and shared his foresight with us on "Collaboration in Aged Care" at our 7th Annual Scientific Meeting on June 29th 2013. This year our Scientific Meeting has received an overwhelming response of approaching 100 participants. In the event, our Fellows and members have also shared their successful collaboration projects and excellent updates of their current nursing practice innovations.

We have collaborated with the "Helping Hand" to participate in a their well-known community project - "Community Fun Day" on July 6th 2013 as one of the "Community Programs under Nursing Charter on Tobacco Control" to advocate a smoke-free environment and to promote smoking cessation information to the general public. In the near future, we have planned to collaborate with the "廣東省省護理教育中心" to organize a Gerontology Nurse Specialist Certificate Training Course for the nursing colleagues of Guangdong.

May I also like to take this opportunity to send my deepest gratitude to thank all our devoted Council Members for their wholehearted support to the College.

With that I end my message.

Anders YUEN
President (2012-14),
Hong Kong College of Gerontology Nursing
29th July 2013



2012-2014 Honorary Advisors and Council Members

Contents

President's Message	p1
Keynote Speeches	p2
Oral Presentations	p3-p6
Helping Hand Community Fun Day	p6-p7
Forthcoming Events	p8

Hong Kong College of Gerontology Nursing 7th Scientific Meeting CUM 16th AGM

香港老年學護理專科學院 第七屆科學研討會暨十六周年會員大會

29 June 2013

Collaboration in Aged Care “協作共融，服務耆老”

Snapshots of Scientific Meeting



President delivers souvenir to Keynote Speaker
Dr CHAN Hon-wai, Felix



Keynote speaker Dr CHAN



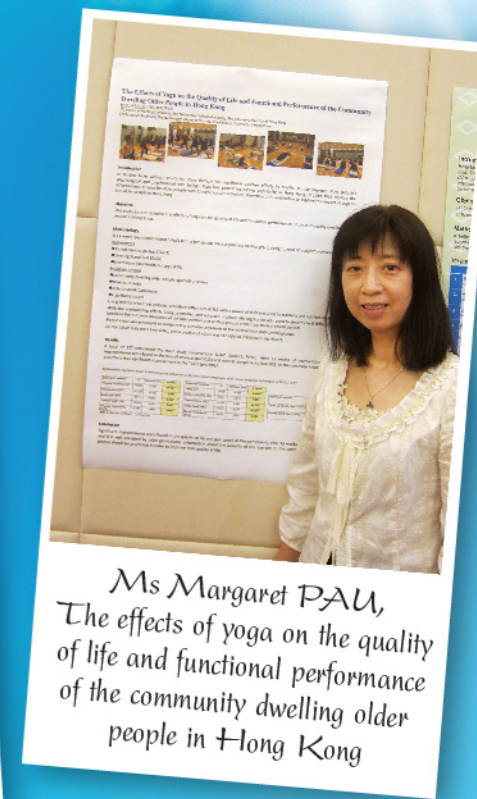
Keynote speaker Dr CHAN, President &
Vice-President takes a happy group photo



Ms Phyllis CP PANG,
Empowering older people and
family—an indication for collaboration
in aged care



Ms Helen CHAN,
Perceived family support in
older people with chronic illness



Ms Margaret PAU,
The effects of yoga on the quality
of life and functional performance
of the community dwelling older
people in Hong Kong

Keynote Speech

Definition of "Collaboration"

Collaboration is working with each other to do a task. It is a process where two or more people or organizations work together to realize shared goals.

Collaboration is NOT just intersection of identical objectives in co-operative ventures, but a deep, collective, determination to reach a common goal.

Essentials of "Collaboration"

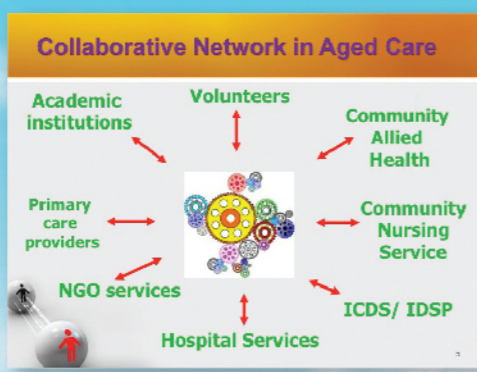
- Common goal / endeavor
- Sharing of Knowledge
- Mutual learning
- Effective communication
- Building consensus
- Engagement
- Change management
- Mobilization of resources
- Leadership

Why "Collaboration" ?

- Synergy
- Symbiosis
- Greater resources
- Greater recognition
- Greater reward
- Unity is strength
- Win Win
- 1 + 1 > 2

Multi-disciplinary Team

- Doctor
- Nurse
- Social Worker
- Therapists
- Clerical & supporting staff
- Spiritual care
- Family



The Scientific meeting has attracted lots of participants



Participants listened attentively during the presentation session



Sponsoring company



Sponsoring company



Falling into Places: A Practical and Tailor-made Approach for Conducting Interdisciplinary Education on Falls Prevention

Choy King Lun¹, Chow LM¹, Wong LN², Chung HFF³,
Chan WSW⁴, Ho HLH⁵

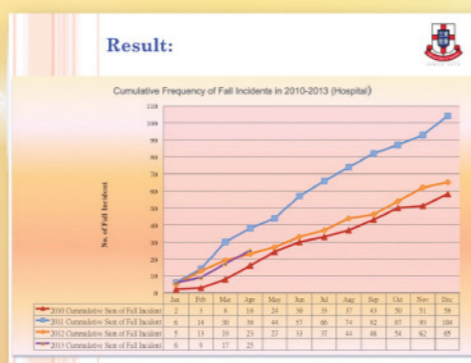
¹Department of Medicine, ²Department of Surgery,
³Physiotherapy, ⁴Occupational Therapy,
⁵Department of Pharmacy,
Tung Wah Hospital



President delivers souvenir to Mr CHOY King Lun

Nurse:
OPAR – Obligatory Physiological Activities Round

病人狀況	巡視重點	床號 (作參考用)
常二便	聽二便 助如廁 巡二便 助步行	
四肢軟 弱身痛	助上床 助下床 近用品 助活動	
持己見 喜配床	視床位 多溝通 強教育 常提示	
其他:	上床欄 下床欄 查背心 上護報	



A nurse led care model ward in Rehabilitation Hospital for end-of-life older people

Lai Wai Sze Wince, Lau SL, Woo LC,
Lee SCP

Medical & Geriatric Department,
Shatin Hospital



President delivers souvenir to Ms LAI Wai Sze, Wince

- * Differences of nursing care in this NLMW may be:
 - ◆ Nursing assessment: ↑Detailed/comprehensive/holistic* approach for ↑ bed bound patients
 - ◆ ↑ nursing observation and early participation & manage signs / symptoms if appear
 - ◆ Proactive communication with relatives to identify patient care expectation earlier and to discuss with case MO
 - ◆ Nurse round of patients' care process & wound round



- *Nurse feedback**
- * High turn over of patient
 - * More holistic and therapeutic approach
 - * ↑ Autonomy & Empowerment
 - * ↑ Job satisfaction ⇒ Appreciation from patient and family members.

Oral Presentations

A Continuous Quality Improvement Program to enhance the Medication Safety in the Private Aged Homes in Tai Po

Ho Chung Sze Joyce¹, Chau Kam Chun Irene¹,
Chan SY¹, Lo KM²

¹Community Outreach Services Team,
²Department of Medicine,
AHNH

President delivers souvenir to Ms HO Chung Sze, Joyce & Ms CHAU Kam Chun, irene



Background

- * Six cases of suspected medication errors were reported in private nursing homes between May 2009 and November 2010
- * A Continuous Quality Improvement Program on medication safety has been launched since June 2011 to curb medication incidents in 26 private nursing homes in Tai Po region of the New Territories East Cluster



Results

- * Zero cases of medication incidents were recorded in 2011-2012 after commencement of the Program
- * Significant improvement was noted during administration of medication especially in the importance of three checks and five rights

A Survey to understand the knowledge gap of dementia and behavior and psychological symptoms of dementia (BPSD) among formal care-givers in residential care home for the elderly (RCHEs) of New Territories East Cluster (NTEC) of Hong Kong

Ho Tai Tei Isabella
Psycho-geriatric Outreach Nursing Unit,
North District Hospital/NTEC



President delivers souvenir to Ms HO Tai Tei, Isabella



Background

- HK has been aging. By 2036, ¼ population will be over 65.
- Among those aging people, high prevalence in suffering from different kinds of dementia
- Among those people with dementia, over 70% over have behavior and psychological symptoms of dementia (BPSD)
- Most of the elderly will live in aged homes.
- Formal care-givers in HK: HCW and PCW

Study design

- A cross-sectional, descriptive survey with 6 pointed Likert scale
- Convenient sampling
- Sample size: 152

Conclusion

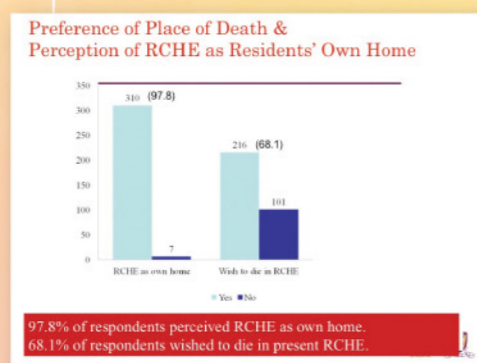
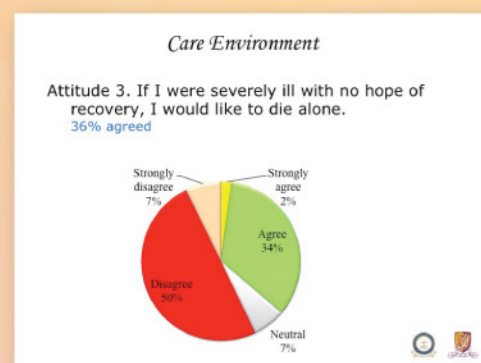
- There is a very basic knowledge in understanding dementia and BPSD among formal care-givers
- Training is insufficient

Preference of environment for end of life care and place of death among older people in residential care homes

Law Po Ka Noble, Chan WHC
The Nethersole School of Nursing,
The Chinese University of Hong Kong



President delivers souvenir to Ms LAW Po Ka, Noble



Conclusions

- RCHE older residents welcome to discuss EOL issues.
- A significant proportion of older residents preferred to die in RCHEs.
- Hospital death may not be the appropriate place of death for older residents.
- EOL care in RCHEs should be considered as one of the essential services for this vulnerable group.

Helping Hand Community Fun Day in Wong Tai Sin District on 6 July 2013

The Helping Hand had invited the Hong Kong College of Gerontology Nursing to participate in the Community Fun Day on 6 July 2013 as the Supporting Organization. HKCGN Council members and volunteer helper had manned the "Quit smoking information booth" and provided blood pressure taking service to the participants in the "Health checking booth". HKCGN unquestionably provided lots of valuable health information to the general public especially the residents in the Wong Tai Sin District. The "Quit smoking information booth" had attracted more than 400 participants.



Snapshots on Helping Hand Community Fun Day



HKCGN Council members assist in blood pressure taking in the health checking booth



President shows support to the health promotional activity on smoking cessation



Volunteer assists the participant to test the CO₂ level with smokerlyzer



Participant tests the CO₂ level with smokerlyzer



Quit smoking information booth



Quit smoking information booth attracts lots of participants



Promotional resources provided by Council on Smoking and Health & Tobacco Control Office of the Department of Health



Quit smoking easy rolling banners